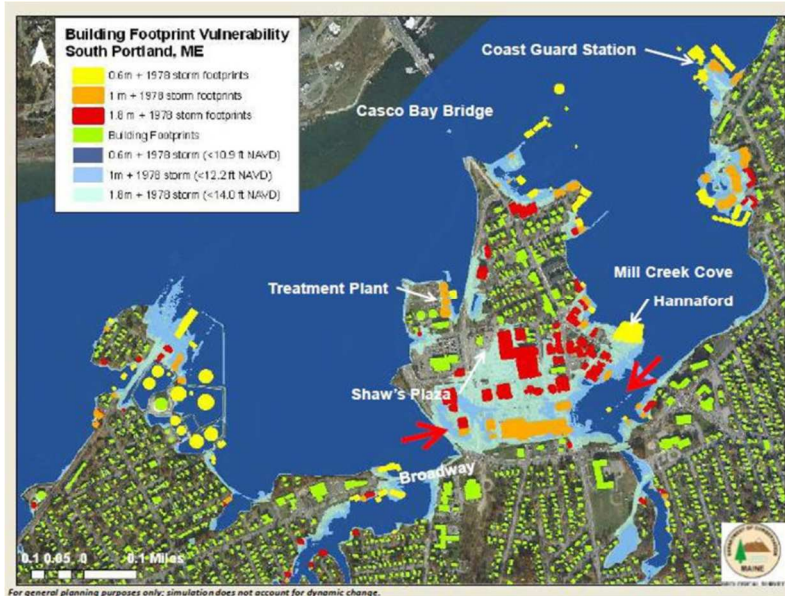




City of South Portland Vulnerability Assessment Mapping



Source: Maine Geological Survey, Inundation Scenario Presentation 2011.

PARTNERS

Gulf of Maine Research Institute, Southern Maine Planning & Development Commission, and Greater Portland Council of Governments

PROJECT DESCRIPTION (Anticipated completion November 2020)

The City's Sustainability Office will create an interactive, web-based vulnerability assessment map for South Portland. This map, which the City expects to update and maintain for a minimum of five years, will bring together disparate information related to historical flooding events, sea-level rise and storm projections, economic and social vulnerability, and critical infrastructure. Once created, local decision-makers, City staff, and the community will be able to switch on operational map layers and select their viewing area/zoom level to better understand the risks posed by coastal hazards. Key stakeholders will then have capacity to develop well-informed programs and policies to improve South Portland's resiliency.

For more information

Julie Rosenbach, Sustainability Director
City of South Portland
rosenbach@southportland.org 207-347-4148

FY19 CCG - 65
1.27.19.

Financial assistance provided by the National Oceanic and Atmospheric Administration, U.S. Department of Commerce Grant CZM NA18NOS4097419 to the Maine Coastal Program. Coastal Community Grants are awarded and administered by the Maine Department of Agriculture, Conservation and Forestry Municipal Planning Assistance Program.

